



BREDON
SCHOOL



Sixth Form

Course Prospectus
2021-22

Contents

3	Welcome from the Headmaster
4	Choosing your options
5	Course levels
6	How we check your progress on your new courses
6	How Sixth Form is different from Year 11
6	Work experience and careers support in the Sixth Form
7	Special Learning Support provision
7	Sixth Form uniform
7	Tutor groups

Courses

8	Pearsons BTEC Level 2 in Agriculture
9	BTEC Level 1/2 first award in Animal Care
10	OCR AS/A Level Art & Design
11	ASDAN Level 2 Land Based Certificate of Personal Effectiveness (CoPE)
12	OCR Level 3 Technical Certificate/ Extended Certificate Business Studies
14	CACHE Level 2 Award Child Development and Care
15	CACHE Level 3 Certificate in Childcare and Education
16	CISCO Industry Certification Level 2 courses IT Essentials & CompTia A+
17	CISCO Industry Certification Level 3 CCNA Routing & Switching
18	Edexcel GCSE Citizenship
19	BTEC Level 2 Countryside and Environment
20	Edexcel BTEC First Award Level 2 Engineering
22	Re-sit IGCSE or Level 1 and 2 Functional Skills English
23	(EPQ) Level 3 Extended Project Qualification
24	OCR A Level Film Studies
25	AQA AS/A Level Geography
26	BTEC Level 3 Subsidiary Diploma Hospitality
27	Edexcel A Level Politics
28	OCR A Level History
29	Re-sit Edexcel GCSE New Specification Mathematics
30	Edexcel Number and Measure, Level 1 Mathematics
31	Edexcel AS/A Level Mathematics
32	Bredon School Certificate Mechanical Engineering and Maintenance
33	GCSE Edexcel Music
34	Edexcel A Level Philosophy and Ethics
35	OCR AS/A Level Photography
36	AQA A Level Physics
37	Pearson BTEC Level 3 National Extended Certificate in Applied Science
38	NCFE Level 3 Certificate in Sport, Physical Activity and Outdoor Learning
40	BTEC Level 2 Travel and Tourism
41	NCFE Level 2 Diploma for entry to the Uniformed Services



Welcome from the Headmaster

Dear Parents and Pupils

Opening a new chapter on your educational journey, the Sixth Form is the time to take ownership of your own learning, to become independent and embrace the wide range of courses we are able to offer at Bredon. Aimed at both academic and vocational qualifications, courses are designed to continue and develop pupil successes from Year 11.

When you choose your options for the coming year, you have the ability to continue with subjects that you have enjoyed to date or embark on new pathways and study subjects that allow you to gain qualifications for the next step in your educational journey. It is not only important to choose the right courses but also to find subjects you are passionate about to ensure success. This is also an important opportunity to consider additional activities on offer here at Bredon, such as the Duke of Edinburgh Award Scheme or Combined Cadet Force as well as our award-winning Sixth Form work experience programme.

In January 2019, Bredon School was ranked first out of 4434 schools and colleges in England for 'value added' in figures published by the Department for Education, a rank which demonstrates how much progress our Sixth Form pupils make between the end of key stage 4 and the end of their Sixth Form Studies (16-18 years).

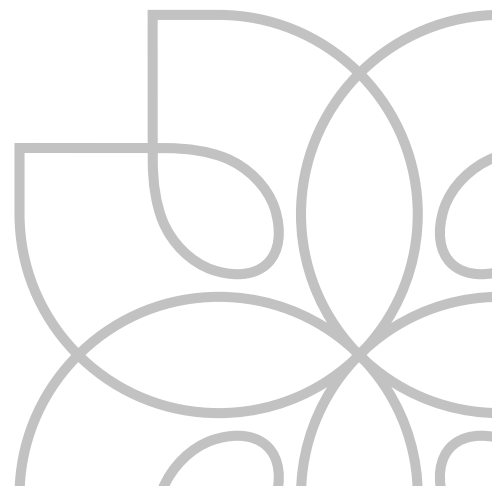
Sixth Form provision at Bredon is coordinated by the Head of Sixth Form, Mrs Adams and supported by a dedicated team of Sixth Form tutors who offer strong pastoral support throughout.

I look forward to welcoming you to the Sixth Form in September. Please do not hesitate to get in touch should you have any questions.

Kindest Regards



Mr Nick Oldham
Headmaster



Choosing your options

In this booklet you will find the course profiles for all the options that are available to study in Year 12 at Bredon School, from September 2021. This year there are a number of new courses that have been added to our exciting range of existing courses. We are constantly reviewing what qualifications are available to schools so that you have the best choices open to you.

The courses you take will depend to an extent on how you have been getting on in Year 11 and the exam results you receive at the end of this year. It is important that you take courses in Year 12/13 that you both enjoy and feel you can excel in. We want to make sure everyone is on the right course. Getting the balance right means that you will have exactly what you need to move to the next step, whether that is further study, university or employment.

We would advise that you choose subjects which:

- you enjoy
- you are good at
- will be a balanced combination for future courses and careers
- will allow you to keep your future options open.





Course levels

Entry Level and Level 1 courses are designed for pupils who are not yet ready to take GCSEs in a particular subject area. These courses are all seen as a start of the pathway towards GCSE and Level 2 qualifications.

Level 2 courses include GCSEs (grades 9-1 or A*-C), OCR Level 2 qualifications and BTEC Level 2 qualifications. They are first studied in Years 10 and 11.

Level 3 courses include AS and A2 Levels (known as A Levels), OCR Level 3 qualifications and BTEC Level 3 qualifications. They are first studied in Years 12 and 13. To do a Level 3 qualification, you will normally have studied that subject at Level 2, but it isn't always necessary.

If you are at all unsure which level is suitable for you, you should discuss this with the Deputy Head for Curriculum in the first instance. We will make a recommendation of which level to consider and give further guidance on suitable courses.

It is also possible to retake GCSE Maths or English if required.

How we check your progress on your new courses

Throughout your new courses, we will keep a close eye on how you are doing. In the first few weeks, your teachers will be looking to see if these courses are suitable for you. We can make changes to courses before the end of September if needed.

How Sixth Form is different from Year 11

One of the major strengths in Sixth Form is smaller class sizes, allowing teaching staff more time to help you through your courses. In Sixth Form, you will become more independent; deadlines are key and it is essential that these are adhered to. Your teachers will be able to guide and support you, to ensure course success.

Study periods are included on the timetable for Sixth Form pupils. These are key sessions to allow additional work to be completed. An exclusive Sixth Form study room is provided to ensure a positive working environment is available.

Work experience and careers guidance in the Sixth Form

We have a very active programme for careers guidance in Sixth Form; we look at all the options available and support you in your choices and decision making.

Many pupils will commence a one day a week work experience placement, fully supported by the school. Such experience will be tailored to your preferred career choices and give you a further insight into future pathways. These placements are regularly visited by our staff to ensure that the placement is working well.

Additional support:

- 1:1 careers advice and guidance
- Mock interviews to practice key interview skills
- Opportunities to visit UCAS/ Higher Education conferences
- Visiting speakers to encourage and inspire
- Support for personal statements and CVs
- Access to Unifrog

Leadership opportunities

There are many leadership opportunities available to our Sixth Form, from Head Boy and Head Girl, to Chair of the School Council and Prefects. All Sixth Form pupils also take part in a leadership camp which usually takes place in September.



Special Learning Support provision

For many of our pupils, Specialised Learning Support (SLS), is key for course success. Small group sessions allow for extra support outside of the classroom.

To discuss individual needs, or to ask for any further information, please contact



Mrs Weston

(Head of Specialist Educational Needs)

westonk@bredonschool.co.uk

and/or

Mrs Grant

(Specialist Educational Needs Coordinator)

grantj@bredonschool.co.uk

Sixth Form uniform

All of our Sixth Form pupils are expected to wear smart office wear for the school day.

Male pupils must wear formal day suits, with a plain shirt and tie.

Female pupils will wear formal jackets, trousers or a skirt, and a suitable blouse.

Footwear remains formal, with black or brown shoes.

The Bredon sports kit is available from our official uniform supplier, Stevensons. You are able to purchase the sports kit through their website:

www.stevensons.co.uk 

More details on our Sixth Form dress code can be found at **bredonschool.org.uk/uniform** 

Tutor groups

We have a dedicated team of Sixth Form Tutors, led by our Head of Sixth Form.

Strong pastoral support and commitment is key to the welfare of our pupils. Your personal tutor will help

to support you through your studies and onto the next stage after Sixth Form.



For further information about life in the Sixth Form, contact

Mrs Adam

Head of Sixth Form

adamsp@bredonschool.co.uk

Pearsons BTEC Level 2 in Agriculture

i

Course Contact:

Miss Lamb

Assessment:

100% Coursework

Progression:

Accepted for Level 3 course entry

“

“I found the course varied and interesting. I enjoy working and learning outside of the classroom so this subject is ideal for me. Being with the animals is the best bit and the written work is ok and not too difficult.”

- Sixth Form pupil



This course develops a deeper understanding of farming principles, both within livestock and the environment. The three modules studies include sheep production, conservation and improvement of better British habitats and tractor driving. All modules will include practical and written assessments throughout the two years of study.

How is the course structured and graded?

The units are graded Pass, Merit or Distinction. This is based on meeting certain criteria throughout the coursework. A degree of written and independent learning is required, reinforced by many practical sessions on the school farm.

Will this course be suitable for me?

The course involves a great deal of practical work, followed up with evidenced based reports and assignments. You should enjoy working with animals and being outdoors.

What could this course lead to?

This course is aimed at pupils who may wish to study Agriculture or countryside and the environment to a higher level after leaving school.

BTEC Level 1/2 first award in Animal Care

i

Course Contact:

Miss Lamb

Assessment:

75% Coursework

25% Examination

Progression:

Accepted for Further Education



Throughout this course you will cover the key principles, knowledge, understanding and skills relevant to the animal care industry. Learners will study animal health, animal handling, animal welfare and animal housing and accommodation. This includes working closely with the large animals on the farm as well as small domesticated animals such as dogs, rabbits, hamsters and reptiles.

How is the course structured and graded?

The units are graded Pass, Merit or Distinction for the level 2 award. This is based on meeting certain criteria throughout the coursework. A degree of written and independent learning is required, as well as skillful undertaking of evidenced practicals. 25% of your final grade will then be awarded from a written examination. A level 1 qualification is also available with learning requirements reduced to a suitable level.

Will this course be suitable for me?

The course involves a great deal of practical work, followed up with evidenced based reports and assignments. You should enjoy working closely with animals and be confident when handling them.

What could this course lead to?

Learners who achieve a BTEC First graded as Level 1 Pass may progress to related Level 2 vocational or academic qualifications, such as other BTECs or GCSEs. Level 2 learners can then progress to other Level 2 vocational qualifications and related competence-based qualifications for the land-based sector or Level 3 vocational qualifications in Animal management. This will also help with future careers within the animal care industry.

OCR AS/A Level Art & Design

i

Course Contact:

Mrs Pitt

Assessment:

Mix of coursework and
examination

Progression:

Obtain UCAS points

“

“Art is a great course.
You get to explore
themes in more depth,
working as an artist.
You get far more
independence to
develop your own ideas.”

- Sixth Form pupil



Develop your artistic skills to the next level. The AS and A Level course allows you to continue to work on bespoke projects, showcasing your skills and interests. Each unit of the course asks you to focus on experimenting and developing these ideas in different ways. Your projects will be developed to give you opportunity to develop, as a creative perhaps, with a view to progressing onto an Arts based Foundation course.

How is the course structured and graded?

The AS Level requires two projects, one to be completed in a 10 hour exam, whereas to achieve the A Level you will produce a coursework project, a personal study (including essay), one 10 hour exam on a given project, then a 15 hour exam. Each unit requires a different focus and theme, challenging you to experiment and develop as an artist.

Will this course be suitable for me?

This course requires pupils to have a real wish to develop further from their GCSE course. Both courses require commitment outside of timetabled sessions to fulfil the level of investigation needed. There is a written element in the A Level qualification with an emphasis on independent learning and tutorial based teaching. You will ideally need a grade 4 (C) at GCSE Art to progress onto the AS/A Level course.

What could this course lead to?

An AS or A Level qualification in Art allows you to build up a portfolio required for access onto Arts courses. Many pupil's who take the A Level continue onto Art Foundation courses before specialising for their degree.



Level 2 - Land Based Certificate of Personal Effectiveness (CoPE)

**Course Contact:**

Mrs Morris

Assessment:

100% Coursework

Progression:

Accepted for Further
Education



CoPE involves doing a series of challenges based around skills needed throughout adult life. The aim of CoPE is to become a more confident, independent learner whilst finding out about issues that will affect you throughout your life.

How is the course structured and graded?

The course has 12 modules to choose from, with challenges that suit all interests and abilities. Modules include: Communication; The Environment; Health and Fitness; Beliefs and Values; Work Based Learning and many more. You will have to complete six assessed pieces of work, demonstrating skills in research, improving own learning, presentation, discussion, working with others and problem solving. All work is evidence based with written work, photographs and witness statements. Level 2 is equivalent to a B grade at GCSE.

Will this course be suitable for me?

This course is suitable for all abilities and challenges can be designed to suit all interests. It is an ideal opportunity to improve literacy skills too. You'll enjoy this course if you like variety and discovering new skills.

What could this course lead to?

Pupils who have studied this course have gone on to college to study courses of their choosing. This course has been particularly helpful for pupils who were unsure of what they wanted to study as they had the opportunity to explore ideas within a supportive working environment.

OCR Level 3 Technical Certificate/ Extended Certificate Business Studies

**Course Contact:**

Ms Yates

Assessment:

100% Coursework

Progression:

Obtain UCAS points

“

“I loved the practical parts of the course like setting up and running a business networking event. Although there are many assignments, I learned a lot which will help me in the future.”

- Sixth Form pupil

This vocational course provides a high-quality alternative to A Level. You will gain hands-on experience and will focus on specific topics such as human resources, marketing, accounting and business planning. Studying real businesses through trips, outside speakers and work experience brings business to life and should help you to think like a Business person. You will learn how a business might evolve, from a small start-up business to a large multinational organisation. You will consider a range of different business types and investigate how this might affect the objectives that are set. You will also look at the internal structures of businesses, and how different functional areas work together. You will also investigate the legal, financial and ethical constraints under which a business must operate. You will also explore ways in which businesses respond to changes in their economic, social and technological environment, and gain an appreciation of the influence different stakeholders can have upon a business.

How is the course structured and graded?

This qualification is available as a 3 unit Certificate (equivalent to an AS-Level) and a 6 unit Introductory Diploma (equivalent to a full A-Level). You can achieve a Pass, Merit, Distinction or Distinction* Grade; equivalent to an E, C, A or A* A Level grade.

Will this course be suitable for me?

An interest in the business world is essential. The business world places a high value on the ability to research, analyse and evaluate information in order to make considered decisions and you will have the opportunity to gain these vital skills. You will need to be able to use the resources to produce a range of business reports, presentations and proposals. You will develop practical employability skills, including the ability to communicate effectively with both internal and external stakeholders, and to manage your time effectively. You will be expected to be involved in the School's own business, The Shack Farm Shop and Cafe.

What could this course lead to?

This course is designed to prepare you for Higher Education and/or the workplace. Students taking this course have gone on to study a wide range of Business disciplines and other subjects at University and colleges. Others have moved onto apprenticeships in business or employment.



CACHE Level 2 Award Child Development and Care



Course Contact:

Miss Eaton

Assessment:

100% Coursework

Progression:

Accepted for Further Education

“

“This course has given me some real world experience and an idea of how to work with children and young people. I now have some good future options including the chance to study to become a child care professional, consider a career in early years education or continue my studies and specialise in a particular field of study.” - Sixth Form pupil



This qualification provides the opportunity to gain a vocational qualification that gives a basic introduction to the sector. It includes the knowledge and understanding of child development and wellbeing, necessary for working with children in a variety of settings. It is aimed at a range of learners who wish to be introduced to childcare and development for children aged 0-5 years. It also gives learners an insight into their preferred learning styles and assists in developing their ability to study.

Will this course be suitable for me?

This course is for anyone wishing to work in the Early Years and Childcare sector. It leads nicely into the Level 3 qualification which then enables the individual to enter into the workplace as a qualified professional. You must have a good standard of written English and be a hard worker. You will most likely be interested in children and young people and enjoy considering how to improve their opportunities and developmental milestones.

What could this course lead to?

This qualification could lead to further training and development through continuation onto the Level 3 qualification or work options. Anyone who aspires to work their way up to management within this sector should consider this course. It is also suitable for someone considering entering further education to study any Child Care, Health and Social Care courses.

CACHE Level 3 Certificate in Childcare and Education

**Course Contact:**

Mrs Davis

Assessment:

Coursework and Work Placement

Progression:

Accepted for Further Education and work placement



The Level 3 Certificate in Childcare and Education prepares learners to progress on to the Technical Level 3 Diploma in Childcare and Education (Early Years Educator). It is designed for learners who wish to work in early years childcare and education.

How is the course structured and graded?

This qualification is nested. Qualifications within a nested suite allow learners to be topped up to a qualification that is the same level and subject within the Award, Certificate, Diploma structure. It consists of 8 mandatory units covering key areas: child development from conception to 7 years, Children's health and well-being, providing safe environments for children, child health, play and learning, children's additional needs, observation, assessment planning and a professional practice based portfolio.

This qualification is achieved with a mixture of classroom based learning and experience in a work placement.

Will this course be suitable for me?

The course is for a learner who wants to progress to the NCFE CACHE Level 3 Diploma in Childcare and Education (Early years Educator). It is also suitable for progress to higher education and studying the certificate as part of a wider range of study.

What could this course lead to?

Learners can progress to various supervised jobs in the statutory, voluntary or private sectors e.g. nursery schools, pre-school worker, home based childcarer, nanny.

The certificate also provides learners with direct progression to the NCFE CACHE Level 3 Diploma in Childcare and Education (Early Years Educator)



Industry
Certification
Level 2 courses
IT Essentials
& CompTia A+



Course Contact:

Mr Neethling

Assessment:

Examination only

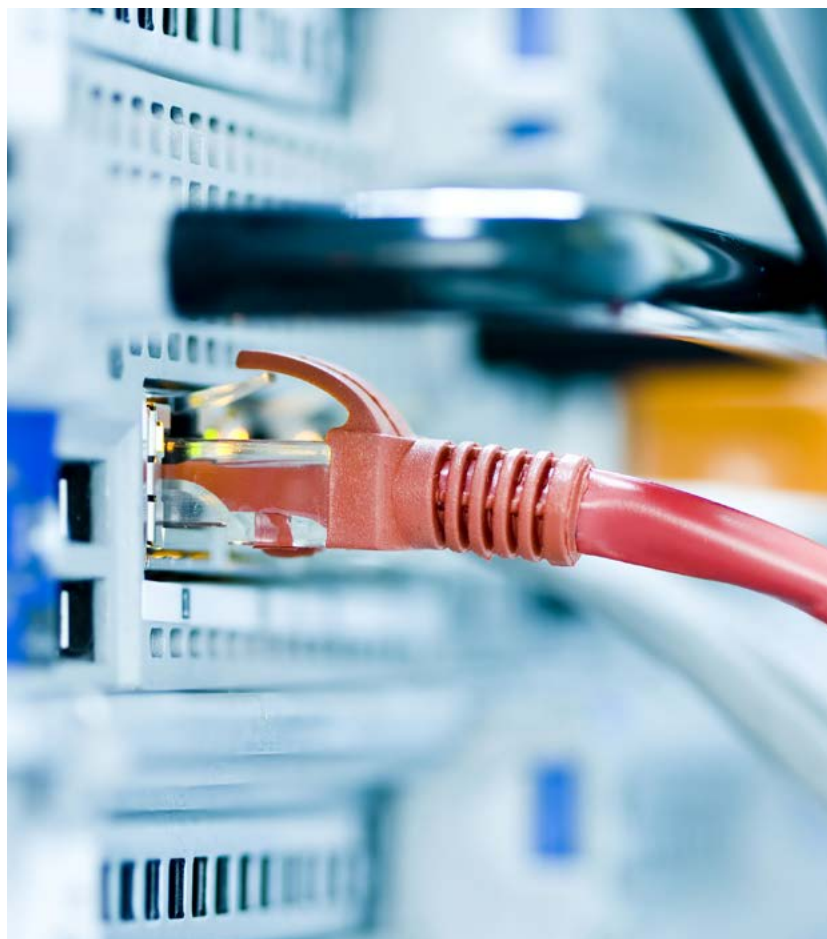
Progression:

Ideal for Apprenticeship and
Further Education

“

“Love it! The course is hands on and the combination of theory and practical work suits my learning style.”

- Sixth Form pupil



These are industry certifications at Level 2. You will learn about computer components, how to identify different components, how to strip and rebuild a computer, and how to load operating systems and software to make your computer work effectively. You will also learn about printers, tablets and smart phones and their operating systems as well as viruses, worms and security.

Will this course be suitable for me?

If you are interested in computers and prepared to work hard then this course will offer you a route to a bright future. It is very much “full on” and pupils have to apply themselves every day.

What could this course lead to?

Some pupil's will complete the full course within one year (Year 12) and then they will start on the CCNA course in Year 13. The main focus is to gain an IT Apprenticeship.



Industry Certification Level 3 CCNA Routing & Switching

**Course Contact:**

Mr Neethling

Assessment:

Examination only

Progression:

Ideal for Apprenticeship and
Further Education

“

“CISCO is amazing. I have learned more than ever before. There is no write up course work; it is all about what you know.” - Sixth Form pupil



The course consists of various units each with nine to twelve chapters. We aim to complete the first two units within four terms after which pupils will sit the ICND-1 External Exam. Pupils must pass this exam before they will be allowed to continue with the third and fourth units. The course material is a mixture of theoretical and practical work. Pupils must gain 70% for both practical and theory final exams to gain a pass certification.

Will this course be suitable for me?

If you are interested in computers and networking then this course will be suitable. The course is very much ‘full on’ and occupies two option blocks. Pupils will thus have 10 periods per week. There are no pre-requisites for this course other than being prepared to work very hard.

What could this course lead to?

The main focus is to help pupils gain proper apprenticeships in the IT Sector. There are also various options should pupils wish to continue with their studies at a higher education facility.

Edexcel GCSE Citizenship

i

Course Contact:

Mrs K Morris

Assessment:

Examination only

Progression:

Accepted for Further
Education entry



Are you interested in what it means to be a Citizen?
Do you want to understand more about Democracy?
Do you want to understand more about Diversity?

These topics and so much more are studied as part of GCSE Citizenship... There are 5 main themes within the course; Living together in the UK, Democracy at Work in the UK, Law and Justice, Power and Influence and Citizenship in Action.

How is this course structured and graded?

This course is assessed entirely through examination. Pupils will be required to complete a citizenship action and they will be assessed on this in the examination.

Is this course suitable for me?

The course takes into account topical news to support pupil learning. Therefore an interest in society and the news would be an advantage. It is worth considering that this course is graded entirely through examination.

BTEC Level 2 Countryside and Environment

i

Course Contact:

Mr Sime

Assessment:

100% Coursework

Progression:

Accepted for Further
Education entry

“

“This course has given me a great opportunity to fulfil my ambition of becoming a wildlife ranger with the Sussex Wildlife Trust.”

- Sixth Form pupil



You will learn the basics of countryside and environmental management. From basic plant science to nurturing and improving a habitat on the school site, as well as field trips to other sites to gain inspiration and knowledge.

Will this course be suitable for me?

The course involves a great deal of practical work, followed up with evidenced based reports and assignments. You should enjoy being outdoors and be passionate about being in the countryside and wanting to protect and improve it.

What could this course lead to?

It is aimed at those that would like to continue higher study/work in a similar field after leaving school. The options would include, but not be limited to: Countryside management, game keeping, animal husbandry, agriculture, horticulture, environmental science.

Edexcel BTEC First Award Level 2 Engineering

**Course Contact:**

Mr Wright

Assessment:

Mix of coursework
and examination

Progression:

Accepted for Further
Education entry



“The information that
I learned about health
and safety has really
helped me, when setting
up my own business.”

- Sixth Form pupil

On this course you will learn about: how engineering and engineers have shaped the modern world; how products are resourced, designed and manufactured; how engineers and engineering is in the forefront of making our planet a cleaner and greener place; how engineering is a universal language spoken all over the world and how new production techniques are leading to more and more advanced products.

How is the course structured and graded?

This qualification is available in a three unit Award that is equivalent to a single GCSE.

In the first year you will study units covering: The Engineered World (this is a compulsory unit and is externally examined), Investigating Engineering Products and Machining Techniques. These units are graded at a Pass, Merit, Distinction and Distinction*. These are equivalent to grades C, B, A and A* at GCSE Level.

Will this course be suitable for me?

This course is a mixture of continual assessment and a final exam. While containing a range of practical elements, it does have a written and research element. If you have a genuine interest in Engineering and are hoping to develop your skills and abilities with a view to a career in the engineering world, this is an ideal course for you. It will give you a spring board into the engineering world beyond Bredon School. It is also an ideal companion subject to Maths and Science.

What could this course lead to?

This course could lead to an engaging and fulfilling career in a wide range of engineering fields from automotive to aeronautics. It could also lead to further specialised studies at university or college.



Re-sit IGCSE or Level 1 and 2 Functional Skills English

i

Course Contact:

Mr Milton

Assessment:

Examination only (IGCSE re-sit). Mix of written work and examination (Level 1 and 2 Functional Skills)

Progression:

Accepted for Further Education entry

“

“It was good to have another go at the GCSE. I got a C second time around because I was able to really focus on my reading and writing skills in a smaller class.”

- Sixth Form pupil



If you gained a grade 3 at IGCSE English or English Language you will have the opportunity to retake those exams in either November or June of Year 12. You could also attempt the Level 2 Functional Skills English course which is similar to GCSE but without any written controlled assessments.

How is the course structured and graded?

You will be entered for the appropriate papers as and when we feel you will be most likely to pass them. This might be as early as November of Year 12 or as late as June of Year 13. The aim is to equip you with all the reading and writing skills you need to obtain a Level 2 Functional Skills qualification in English before you leave Bredon School.

Will this course be suitable for me?

If you almost achieved a Grade 4 (C) in Year 11 then you are strongly encouraged to re-sit your IGCSE examination in Year 12.

What could this course lead to?

Many Level 3 courses and jobs require applicants to have a Level 2 English qualification, so this course is essential if you narrowly missed grade C first time around.

(EPQ) Level 3 Extended Project Qualification

i

Course Contact:

Mrs Hamilton

Assessment:

100% Coursework

Progression:

Obtain UCAS points



The Extended Project Qualification (EPQ) is a Level 3 qualification that is equivalent to an AS Level. It differs from other Level 3 qualifications as it allows pupils to extend their learning in one of their chosen subject areas, or pick an area of interest and produce an extended project of approximately 5,000 words. In this sense, pupils are in control of the subject matter and where the qualification takes them. The course is taken under the supervision of a member of staff who helps the pupil to develop their independent learning skills.

How is the course structured and graded?

The EPQ does not have any exams however, pupil's are required, with appropriate supervision, to: choose an area of interest; draft a title and aims of the project for formal approval by the teacher supervising the project; plan, research and carry out the project; deliver a presentation to a non-specialist audience and provide evidence of all stages of project development and production for assessment. For the final requirement pupils normally produce a project log and a final evaluation. The final piece is graded like an AS Level.

Will this course be suitable for me?

Pupils who would suit this course would typically be very self-motivated as the research element is very much led by the individual. You must be able to sustain an interest in the subject chosen and be well disciplined in meeting deadlines for work. By its nature, this course will require a lot of writing.

What could this course lead to?

This course can supplement any application made to university and has UCAS points. It can demonstrate to employers that a pupil has a particular interest in specific areas, depending on the topic chosen. Pupils who have undertaken an EPQ will have demonstrated certain transferable skills such as research and evaluation of sources.

OCR A Level Film Studies



Course Contact:

Mrs Haines

Assessment:

Mix of coursework
and examination

Progression:

Obtain UCAS points

“

“I enjoy this subject.
We get the chance to
do lots of work with
films and also lots of
other work with images.
I also enjoy filming.”

- Sixth Form pupil



OCR's A Level in Film Studies has been designed to ignite a passion for film and encourage broader cultural and historical perspectives on this academic area of study. This course of study encourages learners to watch, engage critically with and explore a wide range of film; to develop and sustain confident, personal responses to film via textual analysis; and to enjoy a variety of critically acclaimed films across the major genres. These include films from different cultural perspectives, films from the Silent Era to the present day, and different forms of film, including documentary, shorts and experimental.

There are three areas of study in this course; Film History (2 hour examination), Critical Approaches to Film (2 hour examination) and Making a Short Film (30% weighting of your overall grade).

Will this course be suitable for me?

If you have studied GCSE Film Studies, Art, Graphic Communications or Photography and you are interested in learning more about Film, with a view to potentially develop a film related career, this course will be fantastic for you.

What could this course lead to?

This course will aid with progression to further studies at University, or a career within the film industry.

AQA AS/A Level Geography

**Course Contact:**

Mr Monk

Assessment:

Mix of coursework
and examination

Progression:

Obtain UCAS points



“

“I enjoy this subject.
We get the chance to
do lots of work with
films and also lots of
other work with images.
I also enjoy filming.”

- Sixth Form pupil

Geography at both AS and full A Level comprises both physical and human units such as: Coastal Systems and Landscapes; Hazards (tectonic, volcanic, seismic, storm and fire) and Contemporary Urban Environments. You will undertake at least two days of fieldwork in relation to both physical and human processes. As a consequence you will learn how to plan fieldwork, collect primary and secondary data, data presentation, analysis skills and drawing conclusions.

How is the course structured and graded?

The AS course involves studying human and physical topics and geographical skills. These skills will be assessed through fieldwork, followed by two examinations to assess your knowledge of human and physical topics. The full A Level course extends your geographical skills and requires you to undertake a fieldwork based piece of coursework.

Will this course be suitable for me?

The world we live in is likely to change more in the next 50 years than it has ever done before. If you have an interest in the changing world around you and want to be a global citizen, this is a course for you. You will enjoy finding out about our increasingly globalised society, where almost everything we do has a link to another part of the world.

What could this course lead to?

As well as progression to university, Geography equips you with a broad range of personal learning and thinking skills such as teamwork, independent enquiry and creative thinking – all highly valued by employers. Geography pupil's have gone onto varied careers including: Town Planning, Estate Agent, Travel Agent, Expedition Leader, Air Cabin Crew, Lawyer, Conservation Manager, Armed Forces, Teacher, Human Rights Officer, Surveyor, Weather Forecaster, Landscape Architect, Hazard Prediction, Travel Writer, Pollution Analyst, Aid Worker, Marketing, Flood Protection Manager.

BTEC Level 3 Subsidiary Diploma Hospitality

i

Course Contact:

Mr Crwys Williams

Assessment:

Mix of coursework and
examination

Progression:

Accepted for Further
Education entry



You will gain a good insight into the theory and workings of the modern dynamic world of hospitality. Hospitality is the fifth largest employer and competition for high calibre staff has led to hospitality businesses offering attractive pay, conditions and career prospects. This vocational course looks at the supervisory and management of catering. Frequent visits to hospitality businesses take place to ensure learning is current and vocationally relevant. It would be of great benefit to learners if they had work experience or part time work in the catering industry.

How is the course structured and graded?

The Subsidiary Diploma extends the specialist work-related focus of the qualification and covers the key knowledge and practical skills required in the appropriate vocational sector. The course offers greater flexibility and a choice of emphasis through the optional units. It is broadly equivalent to one A Level. Units are graded Pass, Merit and Distinction. The score for each unit is added up to make the final qualification grade. To achieve the overall qualification, all units must be marked at a minimum of a Pass.

Will this course be suitable for me?

This course will suit you if you already have a good interest in hospitality and would consider a career in the industry. Candidates will need to have 4 grade 4 GCSEs (or above), including English. This course will suit learners who enjoy finding out about how things work run and then go on to plan, manage and run their own hospitality events. Learners need to be able to be self-motivated and enjoy getting 'stuck in'.

What could this course lead to?

This course provides students with the opportunity to enter employment in the hospitality industry either full time or as an apprentice. You can also progress onto a higher vocational qualification such as an advanced apprenticeship, hospitality based degree or onto a work based management programme.

Edexcel A Level Politics



Course Contact:

Mr Follett

Assessment:

Examination only

Progression:

Obtain UCAS points

“

“I really enjoyed this course. It allowed me to build on my knowledge of, and interest in, the British political system, as well as gain an understanding of the similarities and differences between the UK and the USA. It taught me to look at the global impact of decisions made by national governments and international organisations on the rest of the world..”

- Sixth Form pupil



The course studies aspects of UK politics through the structures of the UK political system, its institutions, systems and core elements. We consider political participation in the UK through voting and other mechanisms. The course also covers key political models at a philosophical level, such as liberalism and conservatism.

How is the course structured and graded?

This is a linear A Level studied over two years and is assessed by final exams only. There are three components, each assessed by a two hour examination in Year 13.

Will this course be suitable for me?

If you have an interest in UK and global politics, and political theory, this course will be for you. This course requires pupils to be able to write short and long essay questions in time limited situations. It also requires pupils to read and gather information from a wide range of sources, therefore pupils would usually be required to have attained at least a grade 5 in GCSE English.

What could this course lead to?

This course could lead to further study at university in politics or other relevant subjects such as Law, Sociology or Philosophy. It is also a useful subject for entry into the public services such as the army, police or civil service.

OCR A Level History



Course Contact:

Mr Chance

Assessment:

Examination only

Progression:

Obtain UCAS points

“

“You don’t realise until you do this course just how important History is in explaining today’s society.”

- Sixth Form pupil



The course is based around four examined units, which are: England 1445 - 1509; Lancastrians, Yorkists and Henry VII; Democracy and Dictatorship in Germany 1919-63; The Changing Nature of Warfare 1792 – 1945; An independently researched essay of 3000 - 4000 words.

How is the course structured and graded?

All examinations take place at the end of Year 13. Candidates are expected to demonstrate, organise and communicate their knowledge and understanding to analyse and evaluate the key features of the topics studied. Coursework will be internally marked and then externally moderated. This will test a candidate’s ability to explore concepts such as causation, change, continuity, similarity, difference and significance using a range of sources.

Will this course be suitable for me?

This is a traditional A Level course and as such candidates will ideally have at least a grade 4 in GCSE English and History, although a genuine zeal for the subject will also be of benefit. Please be aware that an ability to write extended answers is needed in order to be successful in this course.

What could this course lead to?

History is often referred to as the ‘King of Subjects’. The skills pupils learn at A Level are life skills and therefore are eminently transferable. It is ideal for pupil’s who wish to go on to study various humanities courses in Higher Education, particularly History, Anthropology, Classics, Politics and Economics.

Re-sit Edexcel GCSE New Specification Mathematics

i

Course Contact:

Mr Follett

Assessment:

Examination only

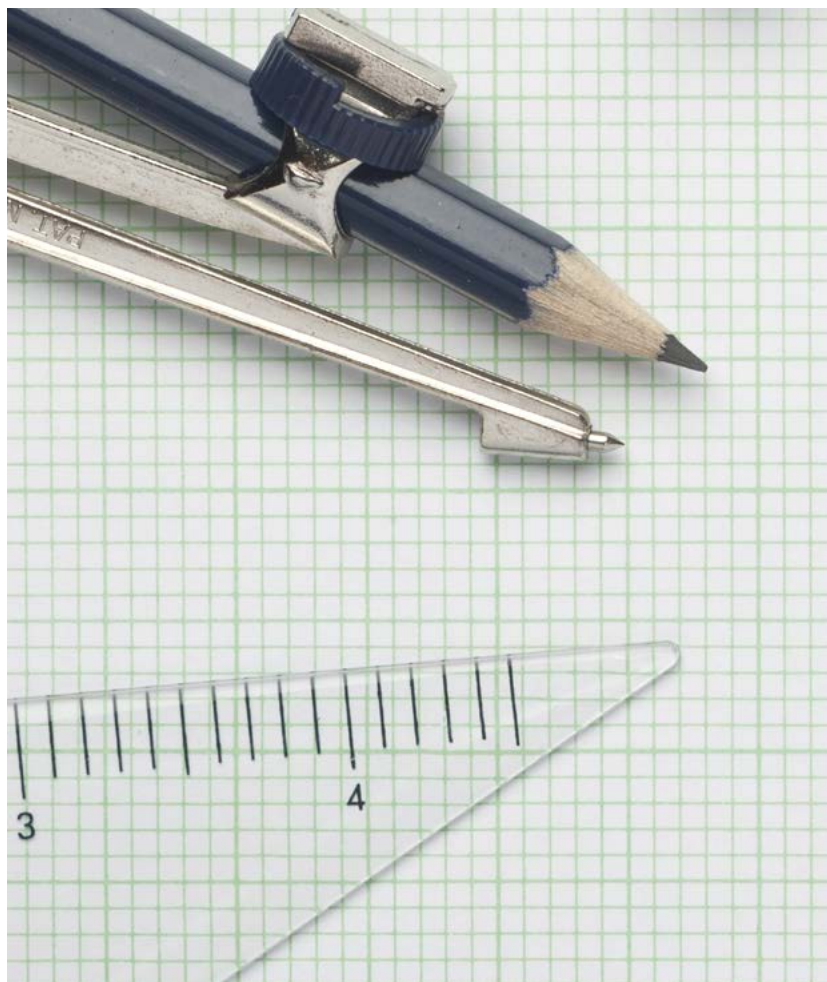
Progression:

Accepted for Further
Education entry

“

“I’ve found I have understood topics much better going over them again in the Sixth Form.”

- Sixth Form pupil



If you did not get a grade 4 (C) or higher at GCSE Mathematics you will have the opportunity to retake your GCSE in Year 12. You will revise topics covered during your GCSE Mathematics course in preparation for a resit examination in the summer term of your first year of Sixth Form.

How is the course structured and graded?

This is a linear GCSE course with a final examination consisting of one non-calculator and two calculator papers. GCSE Mathematics may be sat at either Foundation level (grades 1 to 5) or Higher level (grades 4 to 9). Resit pupil's are usually entered into the Foundation level.

Will this course be suitable for me?

If you have not already achieved a GCSE pass in Mathematics at grade 4 (C) you will be advised to take this course as a pass in Mathematics is often a requirement for future study, training and employment opportunities.

What could this course lead to?

You should find that a GCSE pass at grade 4 or better in Mathematics does make it easier to gain access to other courses or training and employment opportunities that you may wish to pursue at a later date.

Edexcel Number and Measure, Level 1 Mathematics

i

Course Contact:

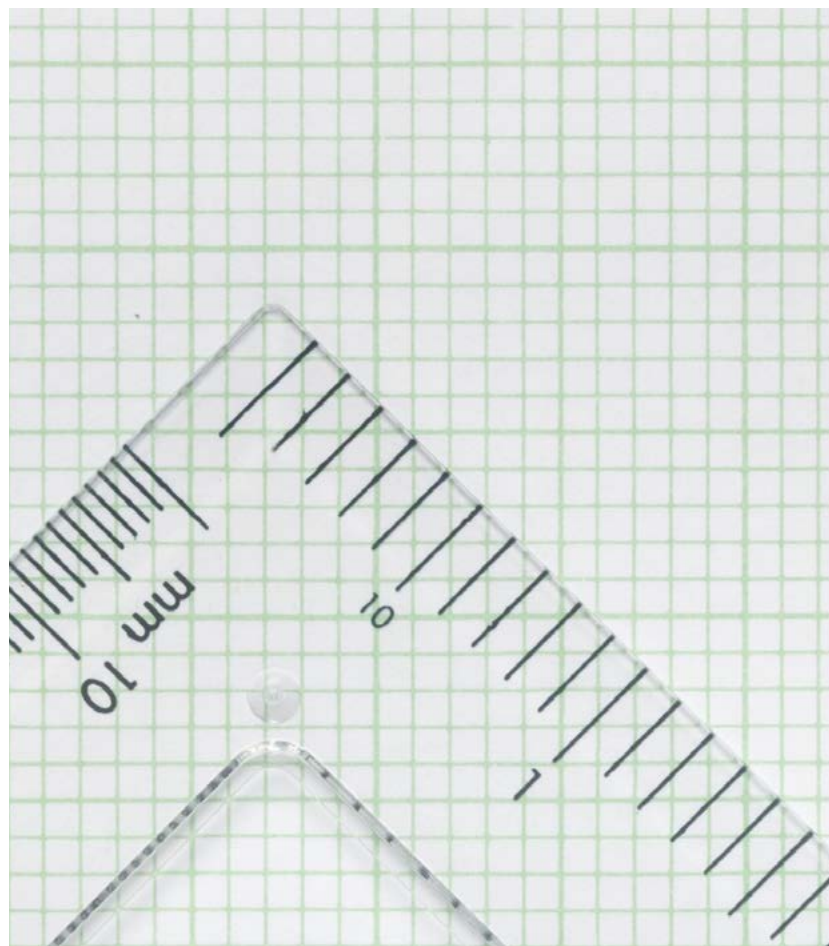
Mr Follett

Assessment:

Examination only

Progression:

Accepted for Further
Education entry



“

“I’ve found completing
the short exams
much better.”

- Sixth Form pupil

If you did not study GCSE Mathematics you will have the opportunity to continue with your Mathematics development using the Level 1 Award in Number and Measure.

This course very much follows Entry Level certification , building on confidence and using Mathematics as a life skill.

How is the course structured and graded?

The course covers the most functional and commonly required aspects of Mathematics. By focusing on a narrower curriculum than GCSE, pupils can develop their skills in the areas which will be of most use in everyday life, or in the workplace. There is one final examination, consisting of calculator and non-calculator sections.

Will this course be suitable for me?

This course continues the Mathematics development from Entry Level 3. It allows pupil's to look and use Mathematics as a life skill. Successful completion of this course will allow pupil's to continue study at Level 2.

What could this course lead to?

This course builds on using Maths as a Life Skill. Completion of Level 1 could lead to Level 2, or GCSE.

Edexcel AS/ A Level Mathematics



Course Contact:

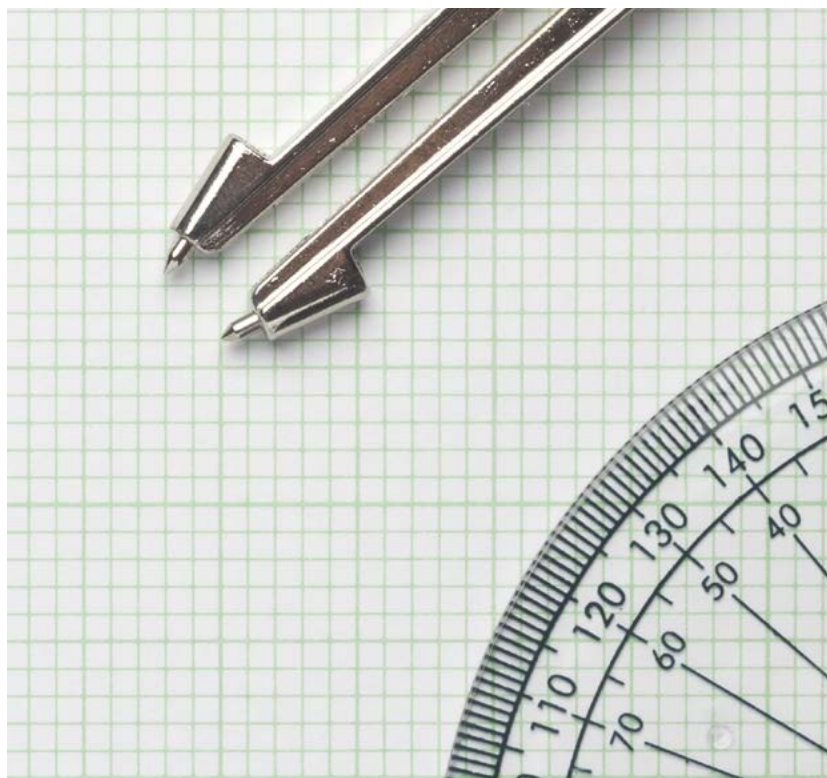
Mr Follett

Assessment:

Examination only

Progression:

Obtain UCAS points



“

“I found that the course was challenging but interesting, particularly when finding pathways, sometimes with support, to solve difficult problems. With effort and perseverance, I was able to find success with tasks independently: this gave me a great sense of achievement.”

- Sixth Form pupil

You will learn about many aspects of Pure Mathematics including Coordinate Geometry and Graphs and develop techniques to solve equations and other algebraic challenges of greater complexity, as the course progresses. Applications of Mathematics within Statistics and Mechanics are studied to enable you to solve real-life problems.

How is the course structured and graded?

The A Level qualification requires the study of both pure and applied Mathematics over a two year period. Statistics and Mechanics over a two year period. At the end of the course the examination process will be three two hour papers covering Pure Mathematics 1, Pure Mathematics 2, Statistics and Mechanics.

The AS Level qualification, also based over a two year period, requires the completion of two papers, two hours for Pure Mathematics and one hour for Statistics and Mechanics.

Will this course be suitable for me?

To be successful on this course, you will need to have studied GCSE Mathematics at Higher level and achieved at least a grade 6 (B) or equivalent. You should be interested in persevering to find solutions to questions, in particular by using the powerful tool of Algebra. The course involves studying and applying various techniques to solve both abstract and real-life problems.

What could this course lead to?

This course is useful for many disciplines studied at university or college including Engineering, the Sciences, Business and Finance, Accountancy and IT, such as Designing Games. The skills learned are valued in all forms of employment.

Bredon School Certificate Mechanical Engineering and Maintenance



Course Contact:

Mr Wright

Assessment:

100% Coursework

Progression:

Preparation for Further
Education entry



On this course you will gain the skills, qualities and knowledge that you will require to start a rewarding and challenging career in the wide and varied world of Engineering. You will learn about basic and more advanced hand and machine tools and their operation, about health and safety and how to conduct yourself safely in the engineering workshop. You will also learn how to care for, maintain and repair machines, tooling and equipment used in the engineering and agricultural world.

How is the course structured and graded?

This qualification is a Bredon School exclusive course. It has been developed to provide a wide range of engineering experiences for Bredon School pupil's who have a real interest in pursuing a career in mechanical engineering.

The course will be conducted and monitored through a series of practical tasks, projects, tests and exercises designed to expand the level of skills, knowledge and experience of the pupil. Please be aware that this programme of study is internally accredited, meaning that the course is not certified by an external examination board.

Will this course be suitable for me?

This course is wholly internally assessed, based on practical work undertaken, with no final exam. This course is based on the development of a wider range of engineering practical skills through practical tasks. There is a requirement for a small amount of record keeping. If you have a deeper interest in engineering and are hoping to further develop your skills and abilities with a view to a possible career in the engineering world, this is an ideal course for you.

What could this course lead to?

This course could lead to an engaging and fulfilling career in engineering fields such as automotive or agricultural maintenance.

GCSE Edexcel Music



Course Contact:

Mrs Haines

Assessment:

30% Composing

30% Performance

40% Written Exam

Progression:

Accepted for Further
Education entry

“

“Music makes me feel
calm and it gives me self
confidence.”

- Sixth Form pupil



In this course pupils will be encouraged to engage critically and creatively with a wide range of music, develop an understanding of the place of music in different cultures and contexts, and reflect on how music is used in the expression of personal and collective identities. The course will also enable pupils to appraise their own music to allow refinement in their own performances and compositions.

How is the course structured and graded?

This course is 30% Performance, 30% Composing, and 40% Appraising. The Appraising section is in the form of a 1 hour 45 minute examination.

Will this course be suitable for me?

If you have a keen interest in composing, performing or producing music then this course will be of interest to you. This course assumes that pupils have a basic understanding of music, either through practical skills or theory.

What could this course lead to?

Our Music qualification has been designed to give all pupils the opportunity to develop their knowledge, understanding and skills of music whatever their previous experience. This course supports the development of musical fluency and provides access to further study of Music at AS and A level.

Edexcel A Level Philosophy and Ethics

**Course Contact:**

Mrs Davis

Assessment:

Examination only

Progression:

Obtain UCAS points



This qualification encourages students to develop an appreciation of religious thought and its contribution to individuals, communities and societies. The qualification does this through an enquiring, critical and reflective approach to the study of religion. It also helps develop a holistic understanding of religion.

How is the course structured and graded?

This course is suitable for any pupil with a keen interest in the subject as you do not have to have studied Religious Studies at GCSE in order to take this course. This would be a good course for pupils who want to continue their learning to A Level and beyond.

Will this course be suitable for me?

The course teaches pupils to become independent learners, problem solvers and critical thinkers. You will need strong mathematical skills, real interest and be willing to put time in outside of lessons.

What could this course lead to?

Completion of this course will earn UCAS points which will aid in any application to University.

OCR AS/A Level Photography

i

Course Contact:

Mrs Haines

Assessment:

Mix of coursework
and examination

Progression:

Obtain UCAS points

“

“A real opportunity to work as a photographer. It has challenged me to think like a photographer and use my camera properly to my full potential.”

- Sixth Form pupil



You will develop your photographic skills to the next level. The AS and A Level courses allow you to continue to work on bespoke projects showcasing your skills and interests. Each unit of the course asks you to focus on experimenting and developing these ideas in different ways. Your projects will be developed to give you opportunity to develop as a photographer perhaps with a view to progressing onto an Arts based Foundation course.

How is the course structured and graded?

The AS Level requires two projects, one to be completed in a 10 hour exam, whereas to achieve the full A Level you will produce a coursework project, a personal study (including essay), then a 15 hour exam. Each unit requires a different focus and theme, challenging you to experiment and develop as a Photographer further. Your projects will take the form of sketchbooks showing evidence for the four assessment objectives.

Will this course be suitable for me?

Yes, if you enjoy developing your camera skills, your photographic compositional skills and discovering wet and dry techniques that can produce photographs. You should also want to understand how photography started and developed through our history to the digital work of today, by analysing photographs taken by both historical and contemporary photographers. Holding Art & Design GCSE is an advantage.

What could this course lead to?

This course will be of particular interest to those intending to present a portfolio at interview for work in the art and design field, or for entry onto an Art College Foundation, Higher BTEC course in Art and Design or a creative degree course.

AQA A Level Physics



Course Contact:

Mrs Saunders

Assessment:

Mix of required practical
and examination

Progression:

Accepted for Further
Education entry

“

“Now I realise just how
important Physics is!”

- Sixth Form pupil



The course is a very well-respected A-level which teaches all the fundamental areas of Physics. As well as being needed for many careers in Science and Engineering, the skills and knowledge developed expand options as a pathway for many different careers. There will be theory, problem solving, questions, practicals and a large element of Mathematics.

How is the course structured and graded?

Year 12 AS Level

Paper 1 and Paper 2 written exams: each 50% of AS Level

Year 13 A Level

Paper 1 written exam: 34% of A Level

Paper 2 34% of A Level

Paper 3 practical skills and data analysis plus written exam: 32% of A Level

Will this course be suitable for me?

The course teaches pupils to become independent learners, problem solvers and critical thinkers. You will need strong mathematical skills, real interest and be willing to put time in outside of lessons.

What could this course lead to?

The study of A Levels Physics can lead to future careers in Science, Engineering, Environmental careers, Architecture, Medicine, IT and Computing, Product Design and Graphic Design; it will open up a world of possibilities.

Pearson BTEC Level 3 National Extended Certificate in Applied Science



Course Contact:

Mrs Britten

Assessment:

Mix of coursework
and examination

Progression:

Obtain UCAS points

“

“I am amazed that I can work at this level. Working on the BTEC Level 3 has really given me confidence in my ability.” - Sixth Form pupil



This course covers the principles of Biology, Chemistry and Physics (at A Level equivalent) and then allows pupils to specialise in subject areas as diverse as Microbiology or Genetics and many others in between. There is a strong practical element to this course and much time will be spent experimenting with different processes. The great thing is that the course draws the best from the three sciences to give you a great selection of topics.

How is the course structured and graded?

The course is assessed by a series of coursework assignments, an assessed practical activity and a written exam. Pupils can gain Pass, Merit or Distinction grades. Pupils study and produce assignments on Practical Scientific Procedures and Techniques (25% weighting) and a further topic of their choice (17% weighting), complete a Science Investigation Skills assessed practical (33% weighting) and sit a Principles and Applications of Science exam (25% weighting).

Will this course be suitable for me?

If you love Science and wish to pursue a technical or scientific based career, this is the course for you. You must be a hard worker and be prepared to express your ideas in project work and writing too. You should hold a minimum of a C grade or equivalent in GCSE Science to attempt this course. Alternatively, you may have a Merit or higher at BTEC Level 2 from Year 11.

What could this course lead to?

This course is ideal for pupils wishing to go to university to study a Science or technical subject. This would be a good qualification for anyone looking for an apprenticeship too and could give access to higher level apprenticeships.



NCFE Level 3 Certificate in Sport, Physical Activity and Outdoor Learning

**Course Contact:**

Miss Lea

Assessment:

100% Coursework

Progression:

Obtain UCAS points

“

“I really enjoyed the practical side of the course, the activities really challenged me but not as much as the written work! However there is no exam and this also fitted really nicely with my Gold Duke of Edinburgh’ Award.” - Sixth Form pupil

You will learn about many aspects of sport, particularly thinking about how exercise and physical activity contribute to a healthy lifestyle. You will find out about the influential characters behind outdoor adventure and how to take part in outdoor activities safely. Time will also be spent discovering career opportunities across the sports and outdoor sectors. There are further units to study that can be selected based on the pupil’s strengths and interests.

How is the course structured and graded?

This qualification is available in a six unit certificate (equivalent to a full A-Level). We will start by initially working towards the first three mandatory Sport based units before choosing three relevant optional units based on the pupil’s interests. You can achieve the course at either a Pass, Merit, Distinction or Distinction* grade. These are equivalent to an E, C, A or A* grade of a full A-Level.

Will this course be suitable for me?

To be successful on this course, you will need to have achieved at least a C grade in GCSE English. It is also helpful if you have studied GCSE PE or Level 2 Sport, but this is not essential. You must be interested in Sport, Health, Leadership and Outdoor and Adventurous Activities. The course involves quite a bit of writing!

What could this course lead to?

Pupil’s taking this course have gone on to study Sports Science, Sports Coaching, Outdoor Leadership and Event Management at University. Others have moved onto apprenticeships in the fitness industry or employment. This qualification can also help with military based careers.

Level 2 BTEC Travel and Tourism

i

Course Contact:

Mr Monk

Assessment:

Internally assessed
assignments only,
no examinations

Progression:

Accepted for Further
Education study



If you enjoy learning about different places and working with others, this could be the qualification for you! This practical qualification provides you with a working knowledge and understanding of one of the most important industries in the world. You will develop essential employability skills that are needed for you to secure employment or progress onto another study level. You'll learn skills such as business awareness, delivering great customer service, and understanding destinations in the UK and worldwide.

How is the course structured and graded?

Units that make up this qualification include: The Development of UK Tourism; International Holiday Destinations; Factors Affecting Travel and Tourism Worldwide. You will be assessed using a variety of methods; these include: assignments, observation, audio, video and presentations. There are no written examinations.

Will this course be suitable for me?

If you enjoy discovering the world around you and want to build employability skills, then this course can be tailored to suit your needs. It would be an excellent course if A Level Geography would be very challenging for you. Field trips and visits are an important part of this qualification and help bring the subject to life.

What could this course lead to?

Although some units are focussed on the exciting and diverse travel and tourism, you will gain broader skills for wider employment opportunities. There are progression routes to Level 3 study beyond this qualification.

NCFE Level 2 Diploma for entry to the Uniformed Services

i

Course Contact:

Miss Eaton

Assessment:

100% Coursework

Progression:

Accepted for Further
Education study

Additional Fees:

Some additional fees to cover
the cost of uniform will apply
for pupils taking this course.

“

“Studying this course
has hugely improved
my leadership skills and
has helped me to build
positive relationships
within a team.”

- Sixth Form pupil



This qualification is for learners aged Pre-16 and above. The qualification aims to inform and prepare potential recruits. It will enable learners to prepare to make a recruitment application or provide a basis for further study and progression towards the entry qualification of a specific service. It will provide learners with an insight into the practical qualities they require, not only for the uniformed services, but also for employment in general.

How is the course structured and graded?

The course is split into different units, ranging from Physical Fitness for the Uniformed Services to Exploring Equality and Diversity for the Uniformed Services. Learners must achieve 43 credits, 35 from the mandatory units and a minimum of eight credits from the optional units (two units),

Will this course be suitable for me?

The course is designed to give an understanding of the uniformed public sector and an opportunity to investigate career opportunities. There are no formal entry requirements, although we would expect pupils to be involved in the Combined Cadet Force (CCF) programme and the Duke of Edinburgh Award Scheme.

This is a brand new course for Bredon School and one we feel would be of great interest to our pupils.

What could this course lead to?

Pupils who achieve this qualification could progress further to Level 3 courses in Certificate in Knowledge of Policing or a Level 3 Diploma for Entry to the Uniformed Services.

Bredon School
Pull Court, Bushley
Tewkesbury
Gloucestershire GL20 6AH

T: 01684 293156
www.bredonschool.org

A part of the Cavendish Education Group